

HP Filament[®] (PEEK type)

PEEK filament for FDM 3D printers with excellent heat and chemical resistance

HP filament (PEEK type) is for FDM 3D printers made from PEEK (polyetheretherketone.)

PEEK is one of the super-engineering plastic with excellent physical properties. HP filament (PEEK type) is made for FDM 3D printers which has excellent high heat resistance, chemical resistance and flame retardance.

Product weight is 100g or 500g, and the color is natural or black.

※Filament diameter : $\phi 1.75 \pm 0.05$

Printing conditions (recommended)

Extruder temperature : 360-390°C

Heat bed temperature : 120-130°C

※The filament can be used only the above recommended conditions.

Please be reminded that success of printing is not guaranteed.

Features

Stability



General dimension tolerance of filament is ± 0.05

Environmental



The product is adapted REACH and RoHS regulations

Applications

Development of automobile parts, electronic devices, analytical equipments, semiconductor products, medical devices...etc

(Do not use for biomedical equipment such as implant body)

ScienceRich Co. Ltd.

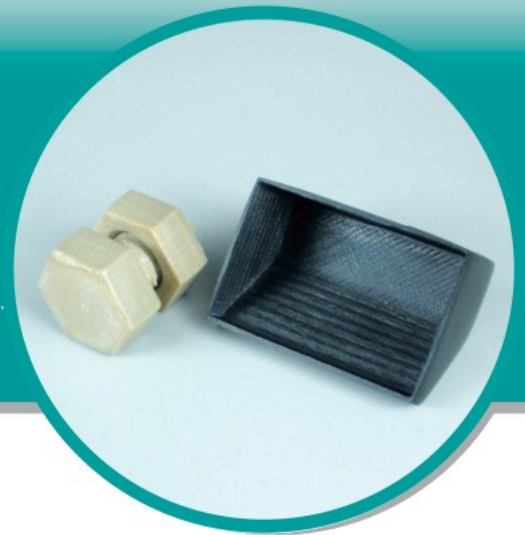
Head Office: No.107, Chenggong 11th St., Zhubei City, Hsinchu County 30264, Taiwan (R.O.C.)

TEL: 886 3 6681085 FAX: 886 3 6675045 E-mail: sales@sciencerich.com

<http://www.sciencerich.com>

Commissioned 3D printing manufacture of PEEK products

Significant cost saving can be possible by using FDM 3D printer



3D printing of PEEK products using our uniquely-developed FDM 3D printers.

In general, manufacturing method of PEEK (Polyetheretherketone) products is Injection molding when it is large lot, or cutting when the volume is small.

We begin commissioned manufacturing business of PEEK products by using our PEEK filament.

As cutting method requires a block of PEEK there must be a huge loss of material especially a finished product is small or complicated.

3D printing can make honeycomb structure therefore both cost and weight of production can be reduced. Please consult us for details and we will not claim any expenses if production is unsuccessful.

Features

Cost efficient



Significant reduction of material loss can be possible

Light weight



Products are lightweight as their internal structure is honeycomb

Accuracy



Products confirm with middle class of JIS B 0405 (To be discussed)

Advanced technology



Complicated shape can be manufactured

Applications

Development of automobile parts, electronic and medical devices, semiconductor products...etc
※Separate negotiations must be needed before adopting mass production.

ScienceRich Co. Ltd.

Head Office: No.107, Chenggong 11th St., Zhubei City, Hsinchu County 30264, Taiwan (R.O.C.)

TEL: 886 3 6681085 FAX: 886 3 6675045 E-mail: sales@sciencerich.com

<http://www.sciencerich.com>